

**ENR 6. EN-ROUTE CHARTS**

**INTENTIONALLY**

**LEFT**

**BLANK**

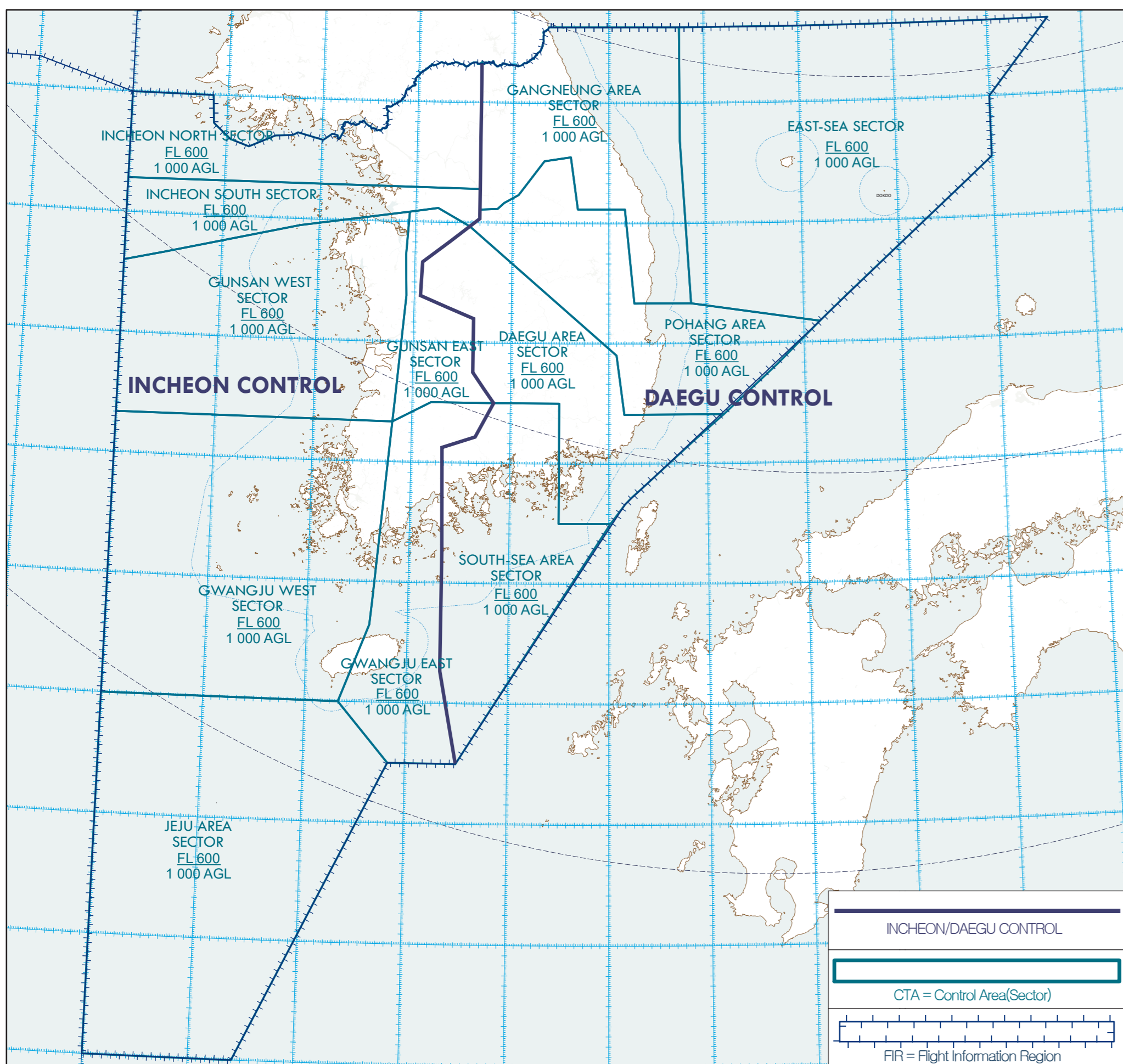
**INTENTIONALLY**

**LEFT**

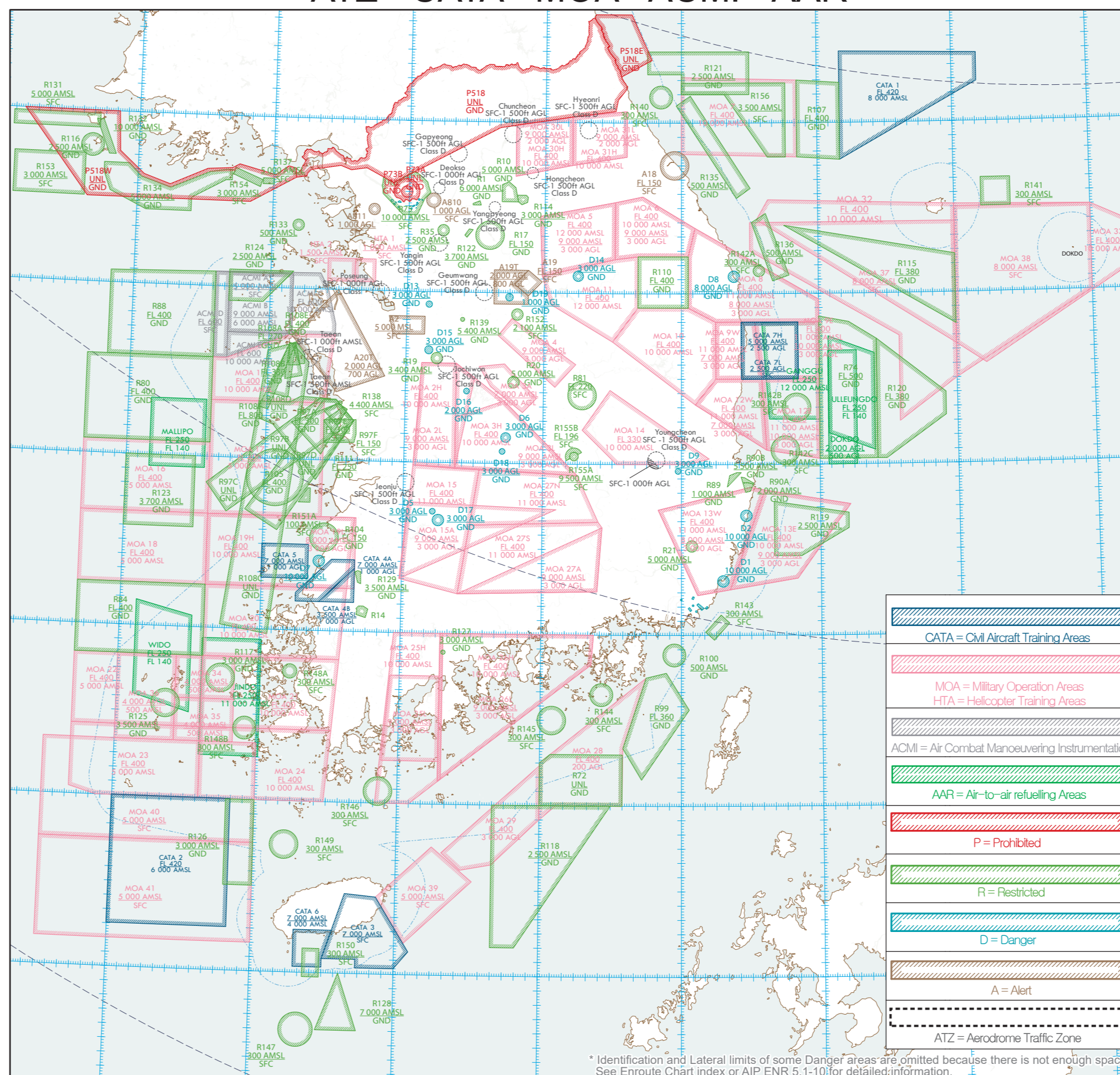
**BLANK**



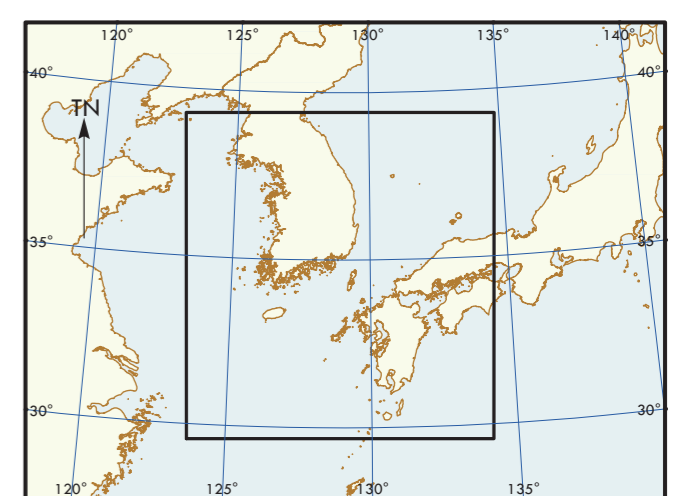
ACC · CTA · FIR



PROHIBITED · RESTRICTED · DANGER · ALERT  
· ATZ · CATA · MOA · ACMI · AAR



ENROUTE CHART  
- ICAO



PUBLICATION 22 OCT 2020

Effective : 1600UTC 02 DEC 2020

OFFICE OF CIVIL AVIATION  
MINISTRY OF LAND, INFRASTRUCTURE AND TRANSPORT  
REPUBLIC OF KOREA

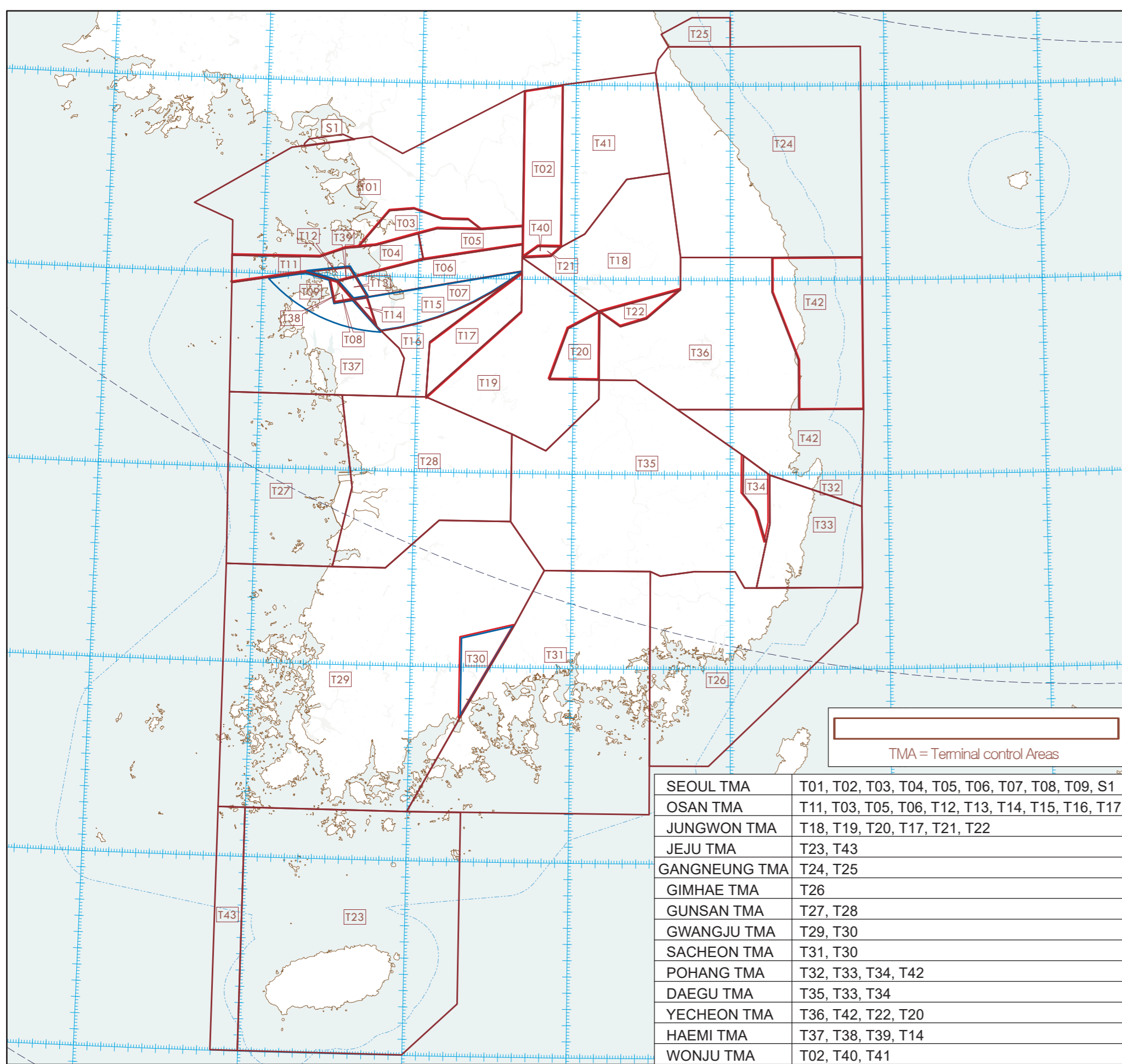
\* The information contained is based on Aeronautical Information Publication.

AIRSPACE RESTRICTIONS

TIME : UTC, ALT : Feet

PROHIBITED AREAS		RESTRICTED AREAS	
RR F73A	RR F73B	RR F51B	RR F51E
GND-LINE	GND-LINE	GND-LINE	GND-LINE
RR R1	RR R2	RR R3	RR R4
GND-4 000 AMSL	GND-4 000 AMSL	GND-4 000 AMSL	GND-4 000 AMSL
MON-FRI 2000-2300	MON-FRI 2000-2300	MON-FRI 2000-2300	MON-FRI 2000-2300
SAT 2000-0400	SAT 2000-0400	SAT 2000-0400	SAT 2000-0400

TMA

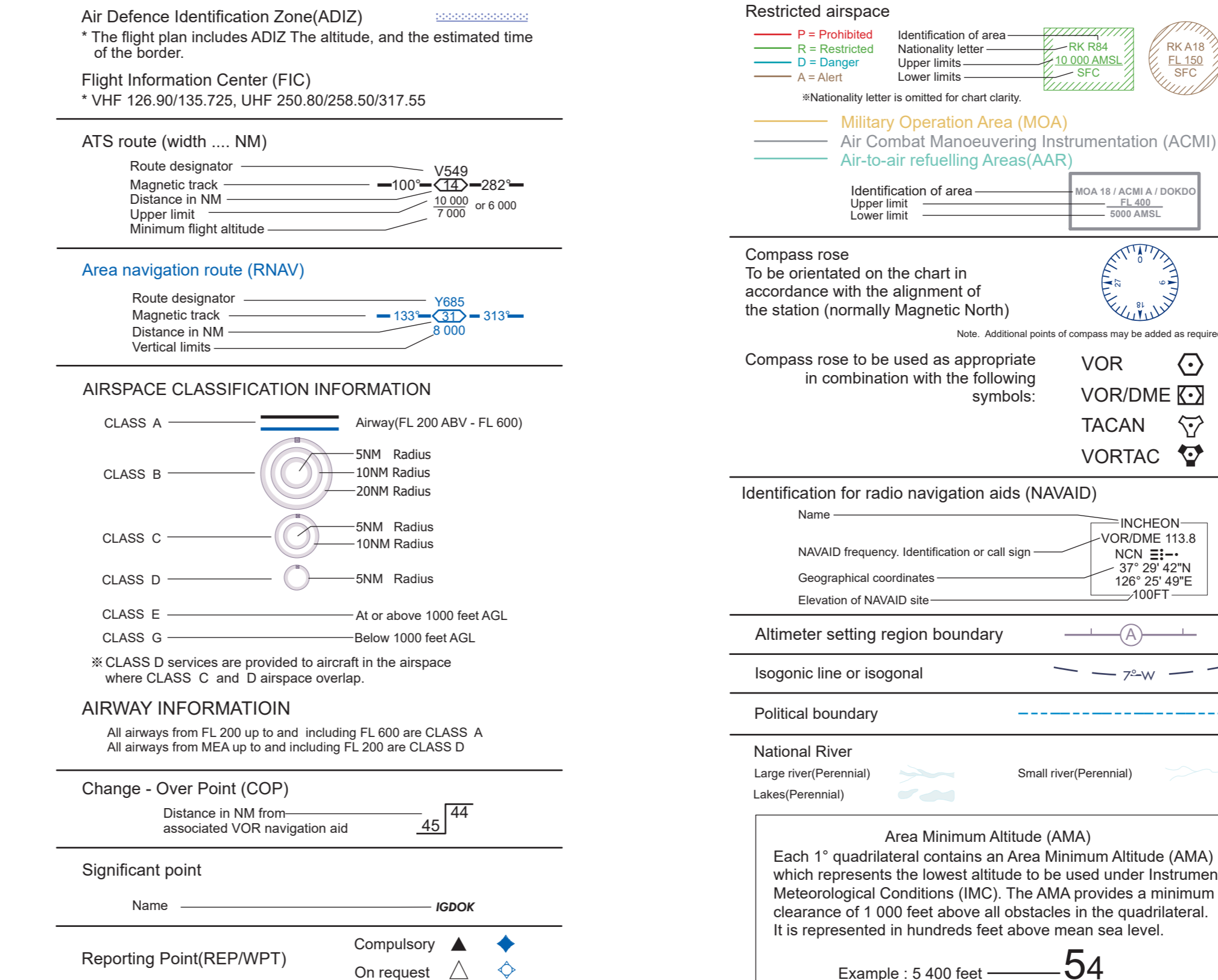
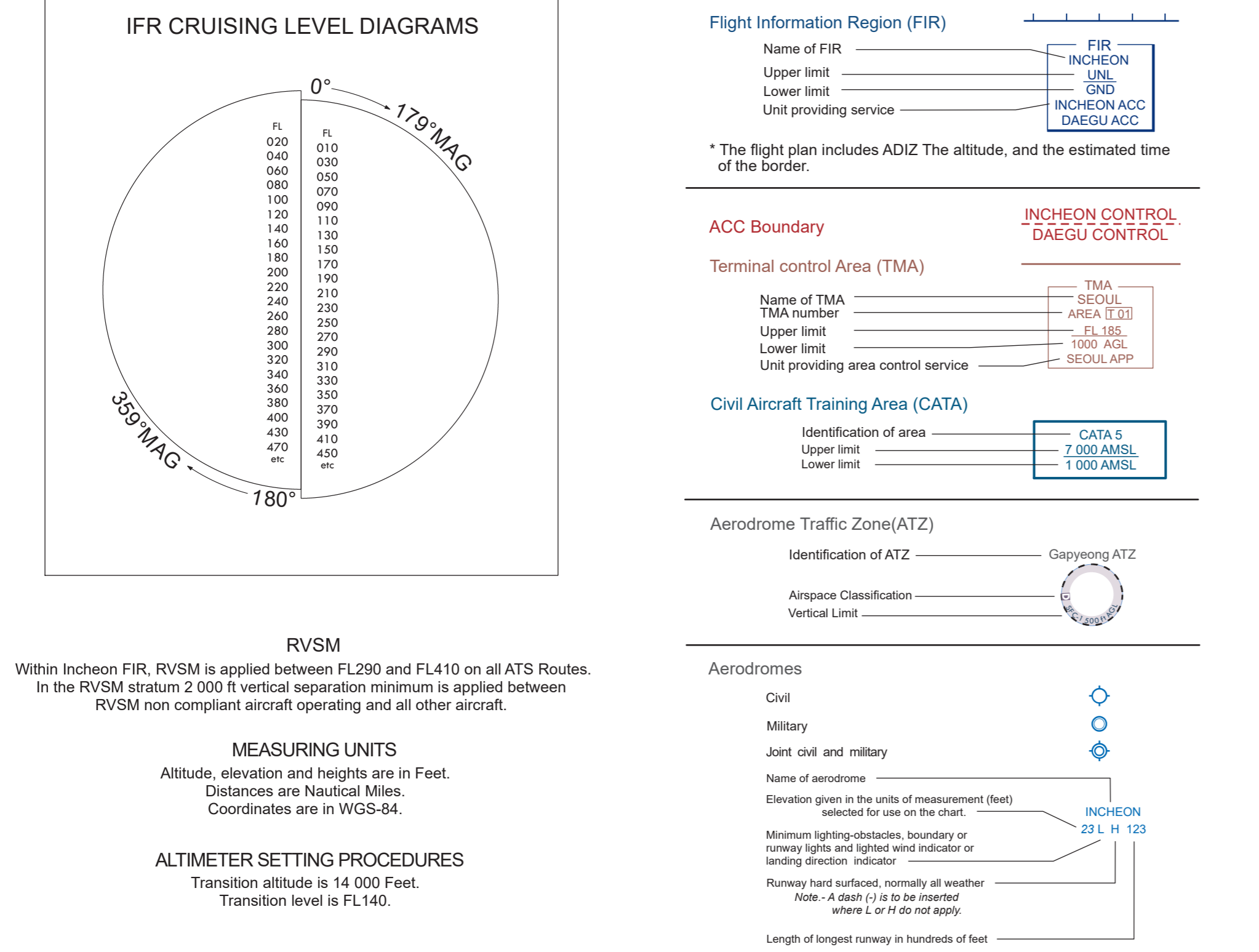


ATS Airspace Classifications

Type of Category	Class	Designated areas and altitude	Type of flight	Separation provided	Service provided	Radio Communication requirement	Subject to ATC clearance
Controlled	A	All airways from above FL 200 to FL 600*	IFR	All aircraft	ATC service	Continuous two-way	Yes
	B	Incheon airport* - Within 5 NM including areas which are extended northward from 37°31'54"N 126°15'25"E - 37°37'21"N 126°25'00"E - 37°32'41"N 126°27'13"E - 37°28'52"N 126°20'03"E and southward from 37°22'47"N 126°25'26"E - 37°28'54"N 126°22'22"E - 37°23'39"N 126°37'01"E - 37°18'51"N 126°27'56"E (SFC-10 000 ft AMSL) - Within 5-10 NM including areas which are extended northward from 37°45'44"N 126°14'46"E - 37°46'40"N 126°22'14"E - 37°37'21"N 126°25'00"E - 37°31'56"N 126°15'25"E and southward from 37°18'51"N 126°27'36"E - 37°23'39"N 126°37'01"E - 37°19'17"N 126°41'02"E - 37°13'53"N 126°31'28'E (1 000 ft AGL-10 000 ft AMSL) - Within 10-20 NM (5 000 ft AGL-10 000 ft AMSL) Gimpo airport* - Within 5 NM including areas which are extended northward from 37°36'46"N 126°39'26"E - 37°39'44"N 126°43'10"E - 37°38'03"N 126°45'18"E - 37°34'58"N 126°41'42"E and southward from 37°28'40"N 126°49'38"E - 37°30'36"N 126°52'52"E - 37°29'07"N 126°54'44"E - 37°26'52"N 126°51'53"E - Within 5-10 NM (1 000 ft AGL-10 000 ft AMSL) - Within 10-20 NM (5 000 ft AGL-10 000 ft AMSL) Jeju Airport - A circle, radius 5 NM centered at RKPC ARP (333044N 126°29'34E) - SFC-10 000 ft AMSL - Within 5 NM including areas which are extended northward from 33°04'48"N 126°35'32"E - 33°05'11"N 126°41'31"E - a counterclockwise arc, radius 10 NM centered at ARP - 33°22'55"E - 126°25'52"E to the beginning - 1 000 ft AMSL - 10 000 ft AMSL - 33°22'55"N 126°22'55"E - a clockwise arc, radius 10 NM centered at ARP - 33°05'11"N 126°41'31"E - 33°05'07"N 126°32'28"E - a counterclockwise arc, radius 20 NM centered at ARP - 33°14'05"N 126°16'18"E - to the beginning - 2 000 ft AMSL - 10 000 ft AMSL	IFR	All aircraft	ATC service	Continuous two-way	Yes
	C	Radius of airports with APP Control** - Within 5 NM (SFC-5 000 ft AGL) - Within 5-10 NM (1 000 ft AGL-5 000 ft AGL)	IFR from IFR IFR from VFR	ATC service for separation from IFR; VFR/IFR traffic information (and traffic avoidance advice on request)	Continuous two-way	Yes	
Uncontrolled	D	All airways from MEA up to and including FL 200 - Airspace from above 100 ft AMSL to FL 185 within Seoul TMA, excluding Class B* - Radius of airports with APP Control** - Within 5 NM (SFC-5 000 ft AGL) or the upper limits altitude of control zone	IFR from IFR IFR from VFR VFR	ATC service including traffic information about VFR flights (and traffic avoidance advice on request)	Continuous two-way	Yes	
	E	Controlled Airspace except Class A, B, C, and D. - Airspace (Lands and Waters) 1 000 ft - 6000ft from the surface of the earth or sea - Airspace over the high seas: 5 000 ft from the surface of the sea - 60 000 ft AMSL	IFR from IFR VFR	ATC service * Traffic information about VFR aircraft as far as practicable	Continuous two-way	Yes	
	G	Uncontrolled airspace except Class A, B, C, D and E. - Airspace (Lands and Waters) Below 1 000 ft from the surface of the earth or sea - Airspace over the high seas: 5 000 ft from the surface of the sea	IFR VFR	Flight information service	No (EXC CIV ACFT)	No	

FIX(WPT)	COORDINATES	FIX(WPT)	COORDINATES	FIX(WPT)	COORDINATES	FIX(WPT)	COORDINATES
AGAYO	371010N 1235953E	BEDOM	352513N 1291754E	BULTI	374032N 1264930E	ENTEL	362311N 1265705E
AGUSU	364521N 1304044E	BELTU	371218N 1254759E	BUSKO	374033N 1301610E	GOGET	372442N 1263036E
ANDOL	373958N 130000E	BESNA	343718N 1290511E	DABIK	361743N 1301143E	GONAV	371048N 1242453E
ANKUS	350730N 1284616E	BIGOB	364325N 1280952E	DALPO	375835N 1242453E	GONAX	362311N 1265016E
ANSIM	372323N 1245009E	BKSH	374032N 1283504E	DALSU	350731N 1264204E	GOSKO	341517N 1274734E
ANUBA	350744N 1273532E	BNNL	372349N 1251359E	DANPA	353036N 1242453E	GUNKU	363441N 1265949E
APARU	352442N 1290932E	BITUX	361645N 1280148E	DANTI	371806N 1243929E	GURDO	370111N 1273823E
APELA	344323N 1291400E	BODOL	371122N 1244954E	DOWKO	322848N 1255859E	GUSKU	335251N 1264357E
ATASO	355344N 1265657E	BOCAN	371041N 1262812E	DOTOL	341515N 1263637E	IGOSK	353140N 1274907E
ATINA	334320N 1270423E	BOKUM	350731N 1282952E	EGOBA	372915N 127246E	IGRAS	371846N 1324411E
ATOTI	300013N 1251154E	BOPTA	302840N 1250851E	ELAPI	362014N 1285051E	INAKO	344719N 1291932E
BASEM	365037N 1275710E	BUNGA	364406N 1263658E	ELPOS	355410N 1264707E	IRHAS	341515N 1264001E
BEDES	360955N 1264844E	BULSO	355609N 1294942E	ENSAL	365554N 1274747E	IRVCK	370745N 1272637E

LEGEND



DANGER AREAS		ALERT AREAS	
RR D1	RR D2	RR A1	RR A2
GND-10 000 AGL	GND-10 000 AGL	SFC-1 000	SFC-1 000
RR D3	RR D4	RR A3	RR A4
GND-10 000 AGL	GND-10 000 AGL	SFC-1 000	SFC-1 000
RR D5	RR D6	RR A5	RR A6
GND-10 000 AGL	GND-10 000 AGL	SFC-1 000	SFC-1 000

RVSM  
Within Incheon FIR, RVSM is applied between FL290 and FL410 on all ATS routes. In the RVSM stratum 2 000 ft vertical separation minimum is applied between RVSM non compliant aircraft operating and all other aircraft.

Change - Over Point (COP)  
Distance in NM from associated VOR navigation aid 45 74

AIR COMBAT MANOEUVERING INSTRUMENTATION (ACMI)  
ACMI A SFC-1 000 AMSL FL 400 10 000 AMSL  
ACMI B SFC-1 000 AMSL FL 400 10 000 AMSL  
ACMI C SFC-1 000 AMSL FL 400 10 000 AMSL

Area Minimum Altitude (AMA)  
Each 1° quadrilateral contains an Area Minimum Altitude (AMA) which represents the lowest altitude to be used under Instrument Meteorological Conditions (IMC). The AMA provides a minimum clearance of 1 000 feet above all obstacles in the quadrilateral. It is represented in hundreds feet above mean sea level.  
Example : 5 400 feet 54





WARNING  
AIRCRAFT INFRINGING UPON  
NON FREE FLYING TERRITORY  
MAY BE FIRED ON  
WITHOUT WARNING

WARNING  
UNLISTED RADIO EMISSIONS FROM THIS AREA MAY CONSTITUTE  
A NAVIGATION HAZARD OR RESULT IN BORDER OVERFLIGHT UNLESS  
UNUSUAL PRECAUTION IS EXERCISED

SEE ENLARGED CHART OF SEOUL AREA

The reliability of aeronautical information  
outside the Incheon FIR is doubtful,  
and it should be used with caution.

COMMUNICATION FACILITIES

INCHON ACC INCHON CONTROL	132.80, 118.625, 290.00, 335.45, 317.30° 128.70, 120.25, 270.00, 280.60, 317.30° 128.15, 134.375, 317.85, 335.55
INCHON NORTH SECTOR	132.15, 123.55, 283.15, 272.80
INCHON SOUTH SECTOR	123.75, 124.80, 241.80, 275.40
GUNSAN EAST SECTOR	120.725, 128.30, 263.90, 272.75
GUNSAN WEST SECTOR	124.225, 132.425, 255.40, 248.10, 233.50°
JEJU AREA SECTOR	COMMON: 122.15, 263.50 EMERGENCY: 121.50, 243.50 CONTINGENCY USE ONLY
DAEGU ACC DAEGU CONTROL	122.25, 125.925, 263.35, 263.80° 134.175, 123.60, 272.40, 233.80° 120.275, 119.125, 253.90, 254.70, 335.75°
EAST-SEA AREA SECTOR	125.375, 125.775, 124.575, 227.90, 317.30°, 335.50°
GANGNEUNG AREA SECTOR	COMMON: 122.15, 263.50 EMERGENCY: 121.50, 243.50 CONTINGENCY USE ONLY
POHANG AREA SECTOR	128.15, 124.575, 128.325, 335.50, 275.20°
DAEGU AREA SECTOR	COMMON: 122.15, 263.50 EMERGENCY: 121.50, 243.50 CONTINGENCY USE ONLY
SOUTH-SEA AREA SECTOR	COMMON: 122.15, 263.50 EMERGENCY: 121.50, 243.50 CONTINGENCY USE ONLY
INCHON/DAEGU PIC DAEGU INFORMATION	128.90, 135.725, 250.80, 255.50, 317.05 EMERGENCY: 121.50, 243.50
SEOUL APP APPROACH CONTROL	127.10, 127.10, 6532 kHz, 8003 kHz 13300 kHz, 13303 kHz, 17904 kHz
SEOUL APP	119.95, 119.10, 119.75, 119.90, 120.80, 121.35, 121.40, 123.25, 123.80, 124.30, 124.80, 125.15, 253.90, 305.70, 303.30, 303.80, 321.90, 321.90
JEJU APP	119.90, 121.20, 124.05, 317.70, 279.80, 121.50, 243.00
GIMHAE APP	119.20, 125.50, 134.40, 135.70, 225.10, 230.10, 253.80, 303.80, 321.90, 321.90
OWANGJU APP	130.80, 228.90, 121.50, 243.00
GANGNEUNG APP	124.80, 304.00, 121.50, 243.00
DAEGU APP	141.20, 263.60, 121.50, 243.00
POHANG APP	134.50, 344.70, 121.50, 243.00
DAEGU APP	120.20, 232.40, 124.25, 121.50, 243.00
DAEGU APP	135.90, 346.30, 121.50, 243.00
YEosu APP	134.50, 229.35, 121.50, 243.00
HAEMJI APP	124.80, 229.25, 253.85, 121.50, 243.00
JUNGWON APP	132.55, 306.70, 121.50, 243.00
GUNSAN APP	126.10, 263.65, 121.50, 243.00
OSAN APP	127.80, 363.10, 121.50, 243.00

CONVENTIONAL routes with 10000 except the following segments  
- AS56 (CAJU - SAMPDO) - INNM  
- CS39 (PSN - INVOK) - INNM  
- GS85 (SEL - SAMPRA) - INNM  
- V11 (PSN - SEL) - INNM  
- AS58 (GANGU - LAMEN) - 500M  
- BS32 (KANSU - CAZIN) - 500M  
- S447 (KANSU - TENAS) - 500M

AS58 (PSN - TENAS) Operational Hours(UTC):  
- Weekdays: 1100 - 2200  
- SAT: 2200 on the preceding day until 2400 on Saturday  
- SUN: 0000 - 2200  
- Holiday: 1600 on the preceding day until 2200 on holiday

Y579 (PSN - TENAS) Operational Hours(UTC):  
- Weekdays: 1600 - 2200  
- SAT: 2200 on the preceding day until 2400 on Saturday  
- SUN: 0000 - 2200  
- Holiday: 1600 on the preceding day until 2200 on holiday

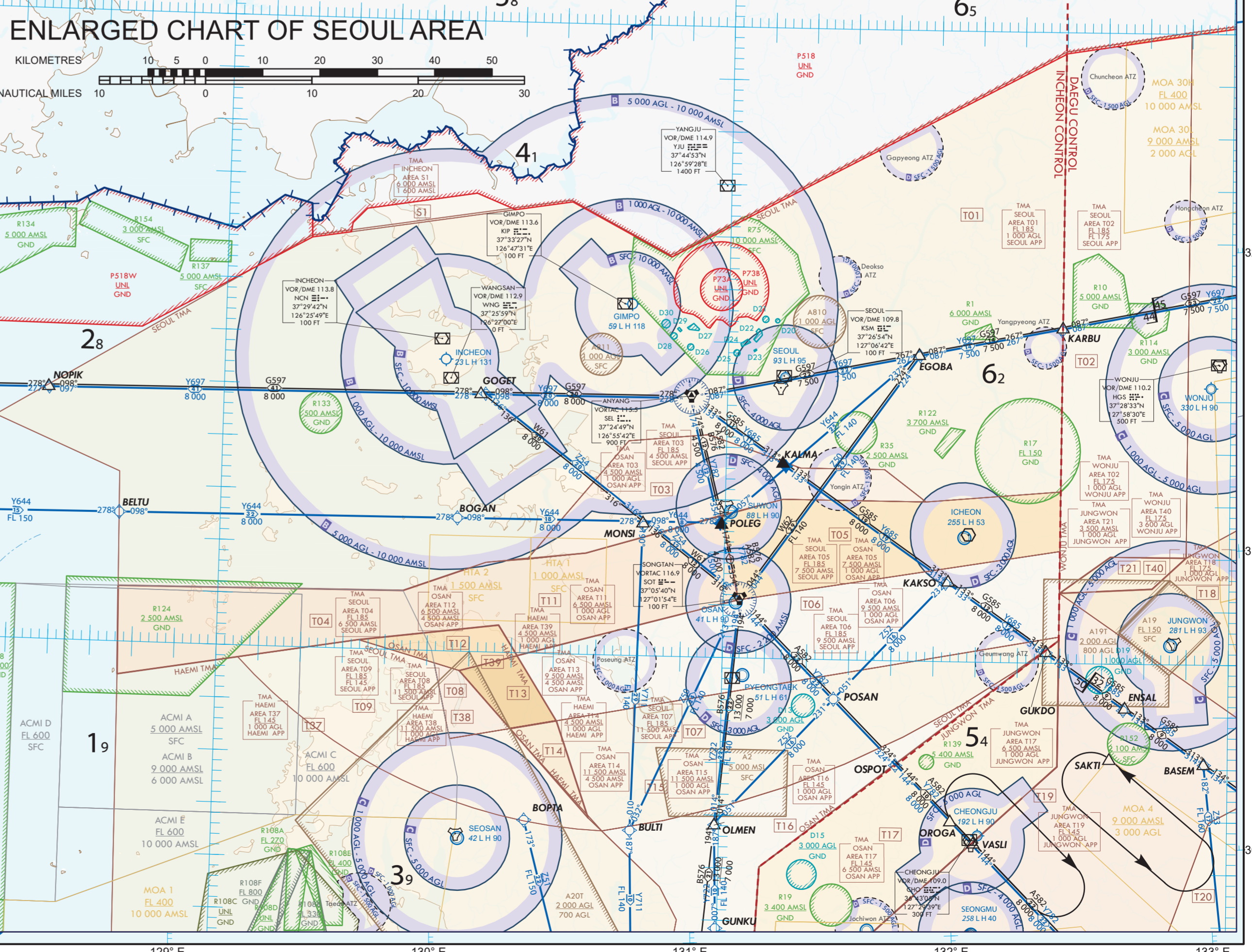
AS93 - Following altitudes are used by Fukuoka ACC:  
- West bound: FL240, FL280 or FL310, FL400  
- Eastbound: FL250, FL290 or FL310, FL390

GS85/86 (SEL - SAMPRA)  
Incheon  
- Only flying westbound from KPO to SEL on GS85 is authorized  
except ACFT departing from RIKY or RNTI.  
- Aircraft flying westbound from SEL to KPO at or above 11 000 ft  
GS85 shall get PPR 24 hours before from Incheon/Daegu ACC.  
- No PPR is needed at or below 10 000 ft

CS97/88 (AGAWU - LAMEN)  
- Only flying westbound from SEL to AGAWU on CS97 is authorized.  
(Unless otherwise assigned by ATIS, flying eastbound in this way  
shall be used).  
- Aircraft flying westbound from AGAWU to SEL on CS97 shall get  
PPR 24 hours before from Incheon/Daegu ACC.  
- Only flying westbound from LANAT to KAO on CS97 shall get 24hrs  
PPR from Daegu ACC.

LS12 (TENAS-ANDOL)  
After ANDOL, MEA is FL290, see AIP JAPAN

V119744 (PSN-PLIT)  
- 11 000 ft to FL240 at or above FL260 will be blocked.  
- At or above 10000, required 15 days PPR from Air Traffic  
Management Office.



SCALE 1:1,360,000  
KILOMETRES  
NAUTICAL MILES

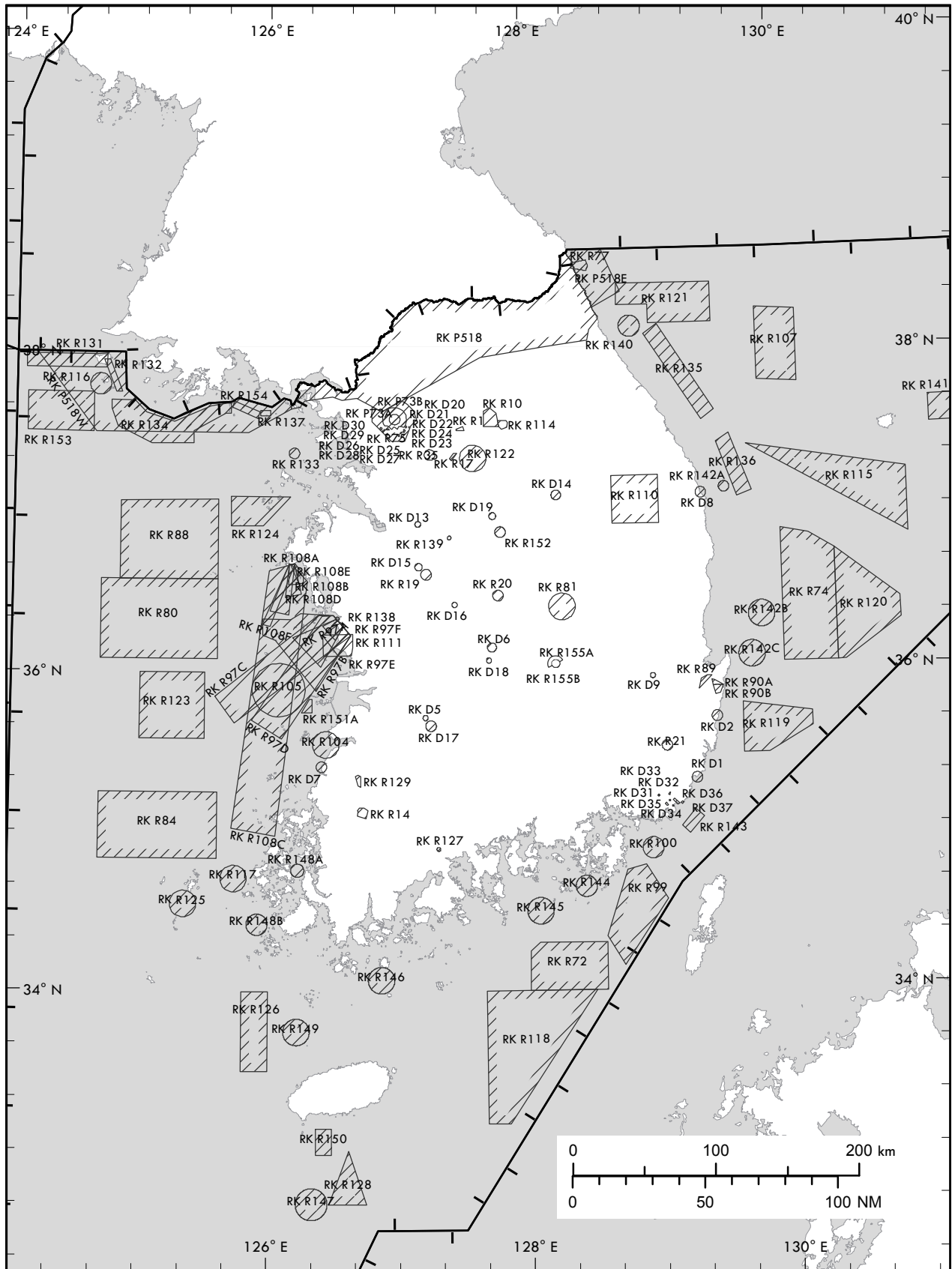


AIR TRAFFIC SERVICES AIRSPACE - INDEX CHART

11

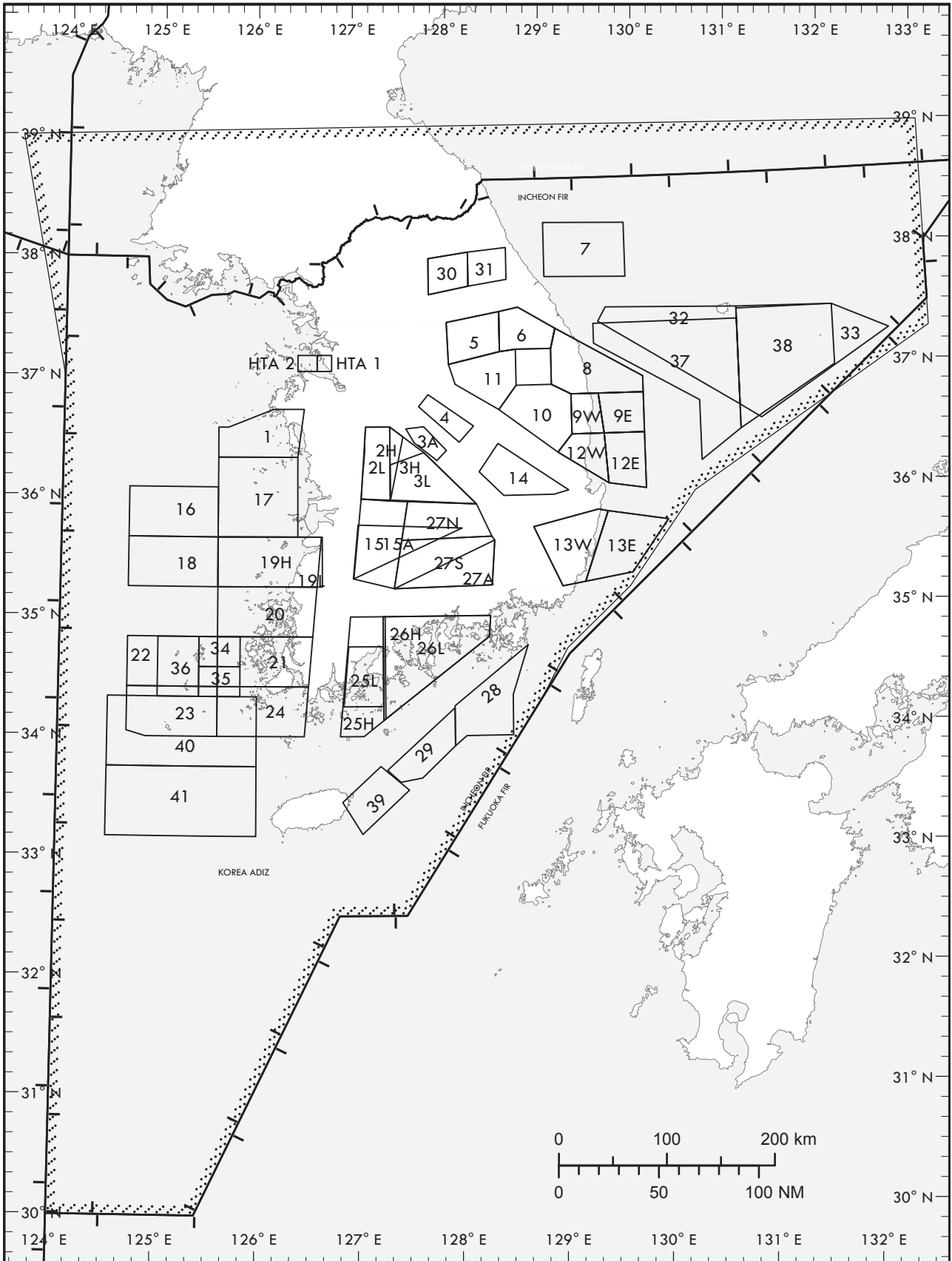
**TO BE DEVELOPED**

### PROHIBITED, RESTRICTED AND DANGER AREAS - INDEX CHART



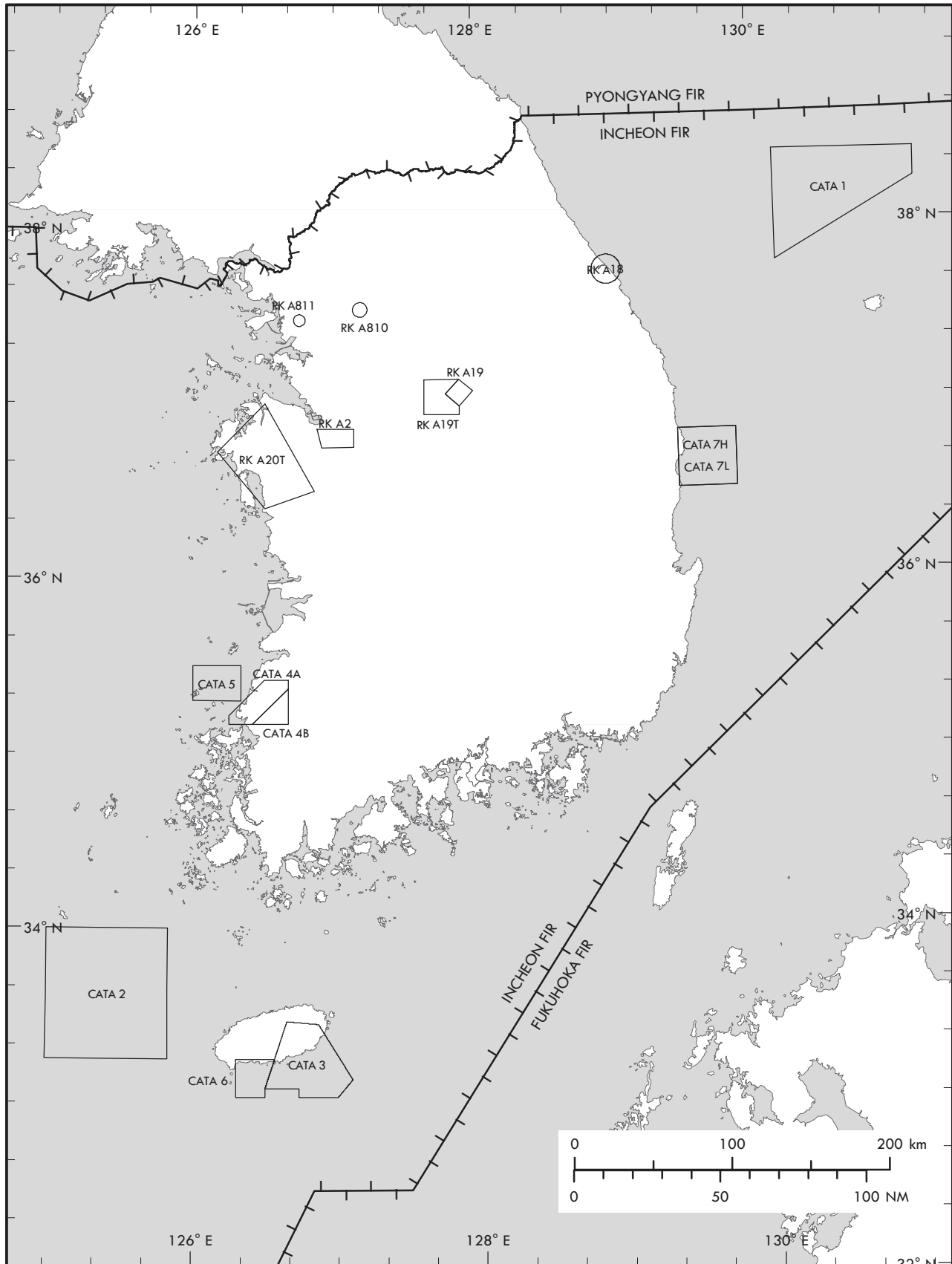
Change : Establishment of RK R155A, R155B.

### MILITARY EXERCISE TRAINING AREAS AND ADIZ - INDEX CHART



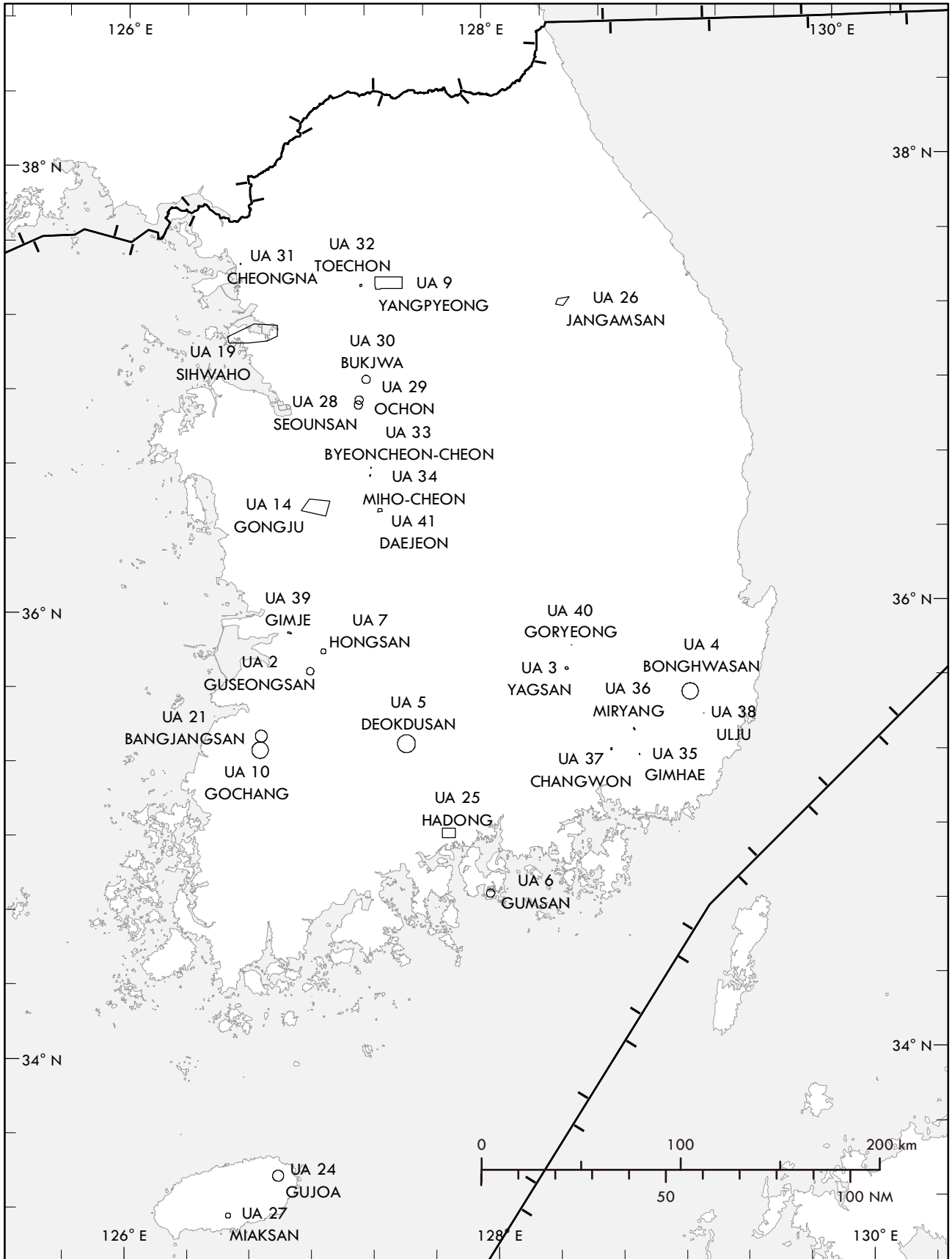
Change : Information of MOA 28.

OTHER ACTIVITIES OF A DANGEROUS NATURE - INDEX CHART



### AERIAL SPORTING AND RECREATIONAL ACTIVITIES -INDEX CHART

The entire area within Incheon FIR is designated as Ultralight vehicle flight restricted area except the following areas



Change : Page control.

RADIO FACILITY - INDEX CHART

**TO BE DEVELOPED**